

Universal offset printing machine

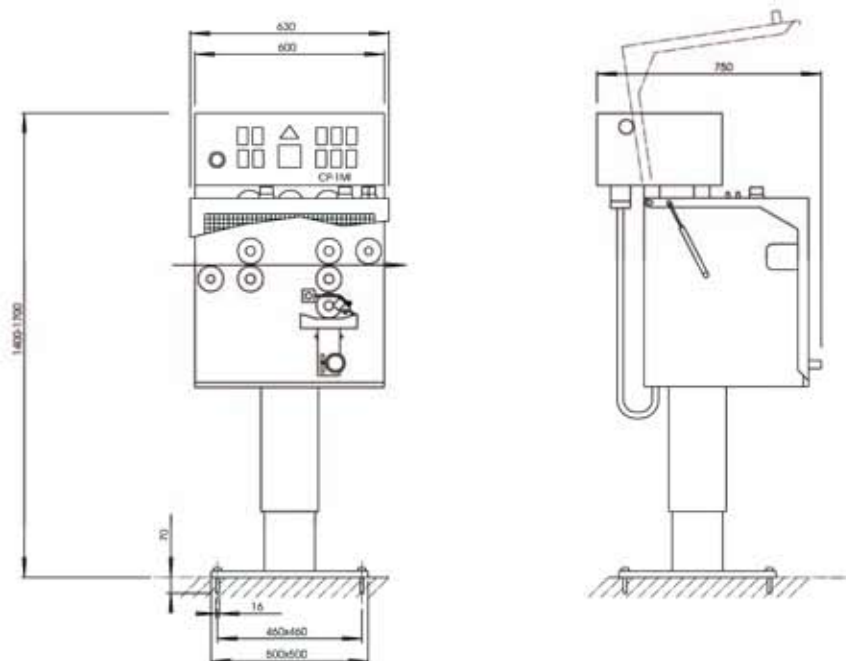


Cableprint CP1Mi



Type of machine	CP1Mi
Type of printing	Offset
Drive	motor assisted
Automatical synchronisation with line	manual
Number of printing stations	1
Printing direction	l. → r. / r. → l.
Maximum printing diameter	Ø 0,8 mm - 60 mm
Lift column electronically adjustable	yes
Print height adjustment	900 mm - 1200 mm
Maximum printing speed	200 m/min
Printing wheel diameter	Ø 80 mm
Mounting hole diameter	16 mm
Ink tray	yes
Ink pump system	optional
Suitable for plane printing wheels	yes
Suitable for concave printing wheels	no
Suitable for embossing/indenting wheels	no
Printing simulator	no
Inline-stroboskop lamp(synchronized)	no
Viscosity control system	no / optional
Viscosity unit for double ink pump system	no
Second ink pump unit for quick ink change	no
Movable machine	optional
Power supply	400 V, 50 Hz, 3 Ph
Weight	appr. 160 kg

- motor assisted
- for printing on cables, hoses, tubes, tapes and belts
- for printing on smooth, uneven or hard surfaces
- high-quality corrosion-resistant materials



DIN EN ISO 9001:2008

RSD TECHNIK GmbH

Walter-Wetzel-Straße 2 • D-79588 Efringen-Kirchen • Phone +49 7628 802 0 • Fax +49 7628 802 80

Mail: sales@rsdtechnik.de • Web: www.rsdgroup.de